

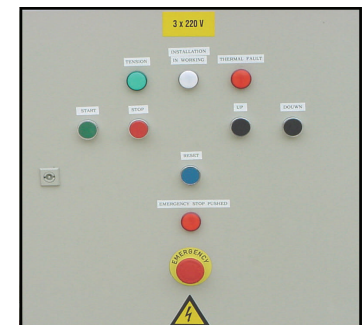
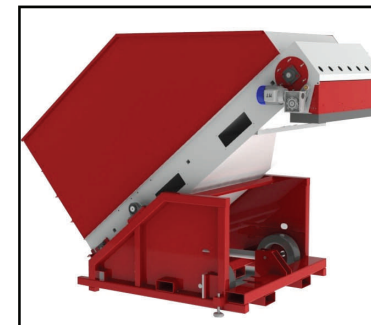
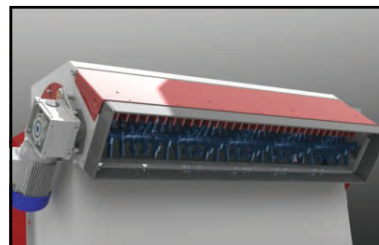
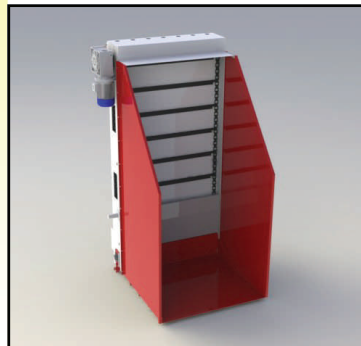
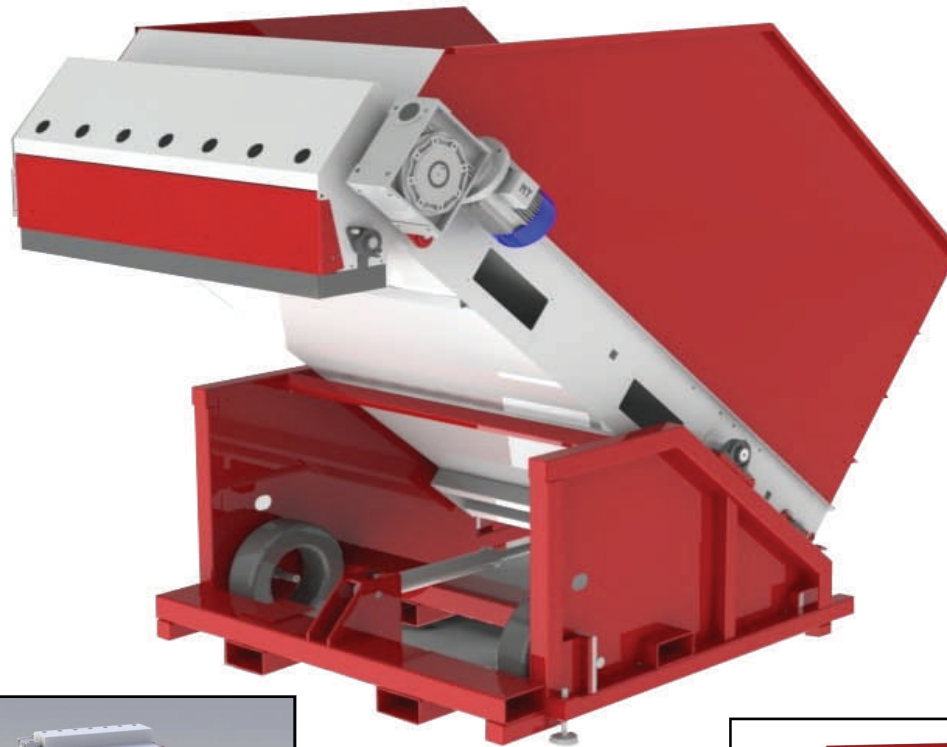
# DBB II – BALE SHAVER

Integrated Horticultural Automation

## FEATURING SYSTEMS FOR:

- Transplanting
- Soil mixing and distribution
- Plug tray fillers
- Integrated seeding lines
- Dispensers and fillers for flats and pots
- Plug grading and consolidation equipment
- Planting lines for cuttings
- Watering booms
- Stationary / movable conveyors
- Transport vehicles
- Custom automation
- Labeling equipment
- All supported by 24 hr. technical assistance
- Installation & service

300 Creekside Drive  
Oberlin, Ohio 44074  
Tel: 440-774-2981  
1-800-354-3750  
Fax: 440-775-2104  
www.agrinomix.com



## Specifications:

Max Bale Size:

Length- 55"

Width- 49"

Height- 110"

Max Bale Weight:

3000 lbs.

Electrical Requirements:

220 VAC, 3 phase 19 amps

Outside Dimensions:

131" L x 74" W x 124" H

Dump Height: 5'-8"

Weight: 4000 lbs.

## Options:

- \* Extension side panels
- \* Mobility package (shown)
- \* ½ bale panel for 55 cu ft bales
- \* Water incorporation

The DBB II is designed to efficiently process highly compressed bales of peat moss. In order to accept bales from a pallet jack or fork lift, the hopper is raised to a vertical position. The bale is "shaved" from beneath by a chain and flight assembly. Peat moss is driven through a processing mill in the exit chute in order to achieve a consistent finished texture. Photoeye sensor controls look into the destination hopper to automatically start and stop the DBB II, supplying media as needed to a bulk hopper, filler or potting machine.